

REDEVELOPMENT PROJECT PROFILE

CAPITOL HOME APARTMENTS

VISION

GREEN, MIXED-INCOME HOUSING
ADJACENT TO CITY CORRIDOR

The Capitol Home Project will include a 4-story mixed-use, mixed-income building with ground floor commercial flex space fronting State Street and approximately 93 housing units that will combine both affordable and market-rate housing.

In addition, the project will be constructed to the latest sustainability standards. The housing units will include 2/3 affordable housing units and 1/3 market rate housing units, with the affordable units serving households earning between 25% and 50% of the area median income (AMI).



*THIS IMAGE IS A CONCEPTUAL RENDERING THAT IS SUBJECT TO CHANGE

DETAILS

ADDRESS
1749 S. State Street

PROPERTY SIZE
1.27 acres

RDA PROJECT AREA
State Street

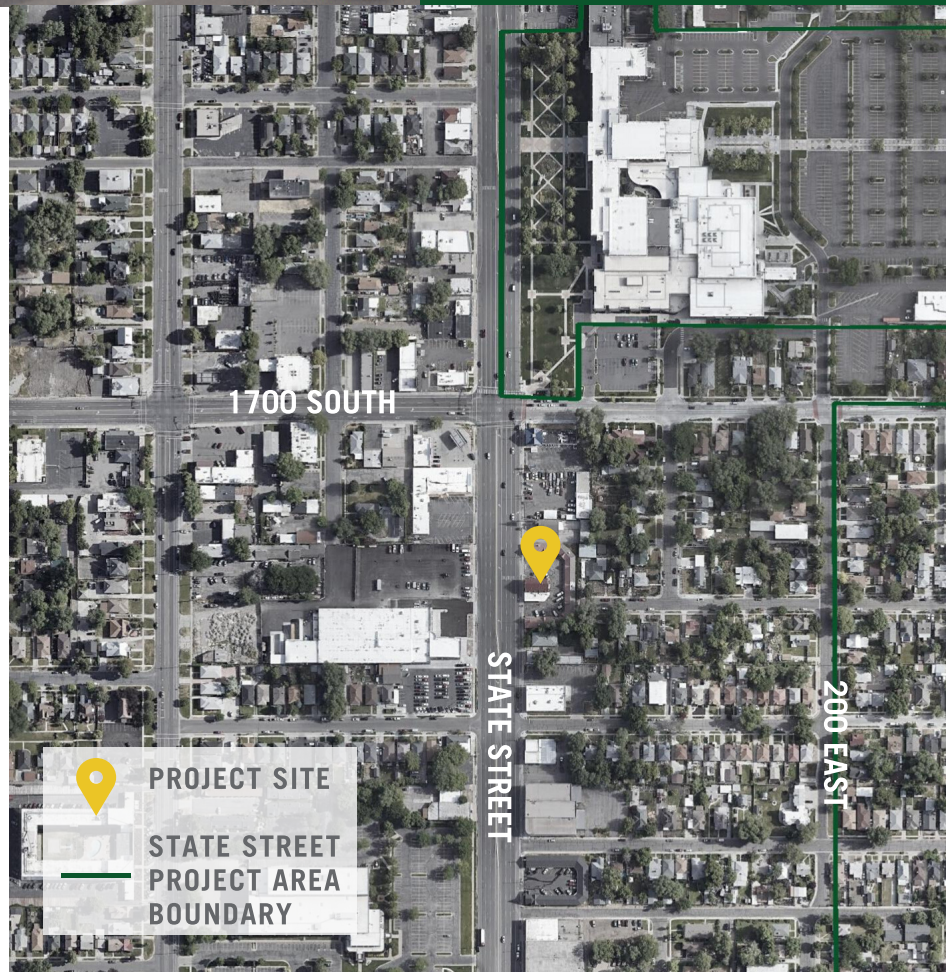
RDA INVESTMENT
\$3.2 million loan

ESTIMATED PROJECT COST
\$20.8 million

DEVELOPMENT PARTNERS
Housing Assistance Management
Enterprise (HAME)

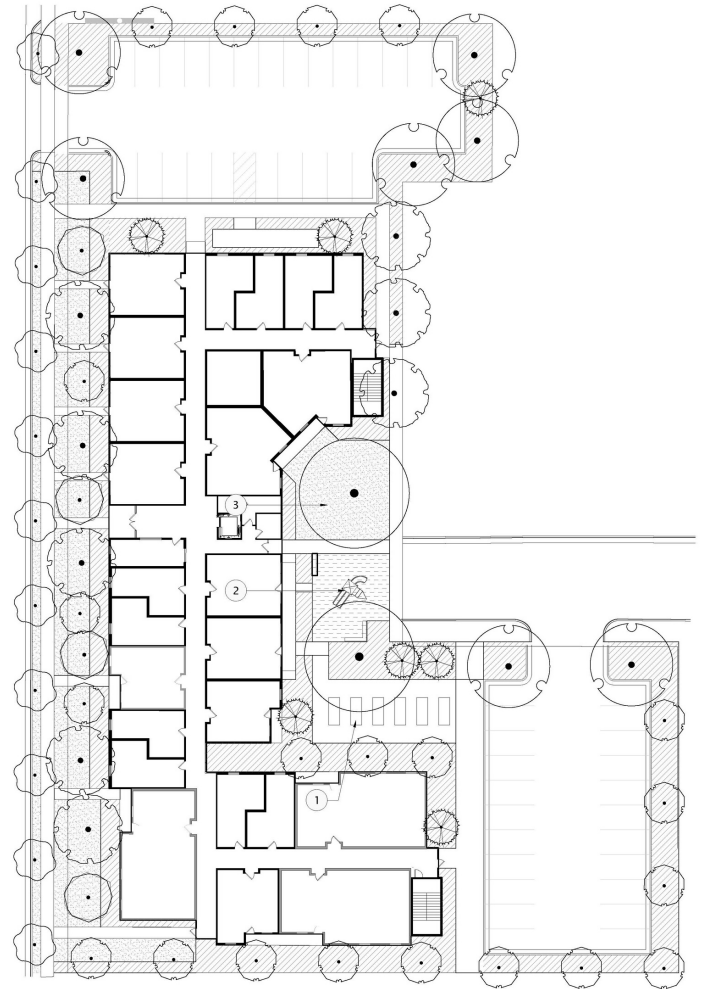
HOUSING UNITS
Approximately 93 (62 affordable)

COMMERCIAL/RETAIL
Approximatey 2,400 square feet



MILESTONES

- ✓ LOAN APPROVED / Q4 2017
- DESIGN FINALIZATION / Q3 2019
- GROUNDBREAKING
- CONSTRUCTION



SLCRDA

PROJECT CONTACT

Tracy Tran
801.535.7241
tracy.tran@slcgov.com