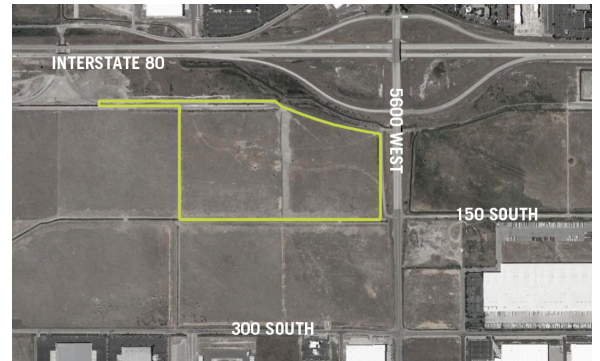


stadler rail community reinvestment area

project details

DEVELOPER: Stadler USA, Inc.
 LOCATION: 5600 West and Interstate 80
 AREA SIZE: 62.75 acres
 REIMBURSEMENT: Up to \$9,610,722 in future tax increment over a 20-year period



economic benefits



Rail car manufacturer Stadler Rail maintains 20 locations employing 7,000, with headquarters in Switzerland and an exclusive U.S. location in Salt Lake City at 500 West 900 North. Stadler's expansion into a larger Salt Lake City facility will more than double the number of employees upon the late-2018 completion of the project's first construction phase, with an additional three phases yielding up to 976 total jobs over the next decade. The average salary of these positions is estimated to be \$55,370, 109% of the Salt Lake County average.

estimated schedule

	Q1 2018	Q4 2018	Q4 2022	Q4 2025	Q4 2029
COMMENCEMENT	●				
PHASE 1 COMPLETION		●			
PHASE 2 COMPLETION			●		
PHASE 3 COMPLETION				●	
PHASE 4 COMPLETION					●

updated 06/05/18



SLCRDA

project contact

Jill Wilkerson-Smith
801.535.7243

jill.wilkerson-smith@slcgov.com